

Section 14

INTERMEDIATE ART

High School ... All Grades ... UP to the Age of 18 years

Conditions of entry are the same as for the Open Art Section 12
Please pay careful attention to the Hanging Instructions in Section 12

Entries Close: Wednesday 25th June, 2025 at 5 p.m

Entry Fees: \$2.00 per item

PLEASE BE MINDFUL THAT SPACE WILL BE LIMITED THIS YEAR SO ENTRIES WILL NEED TO BE NO BIGGER THAN 50x40cm

PRIZE: 1st \$20; 2nd \$10; 3rd \$5

Encouragement Award each class \$2

GRAND CHAMPION: \$50 and Society Rosette

PEOPLE'S CHOICE AWARD – \$40 donated by Peeramon Hotel

CLASS

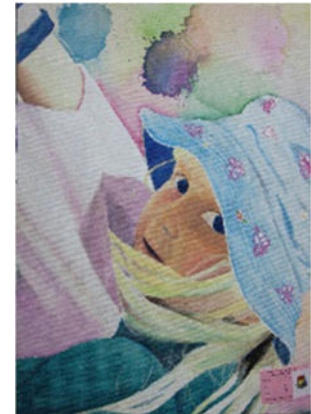
- | | |
|---|---|
| 1 Painting: Open Subject/Open Medium | Sponsored by Malanda Pharmacy |
| 2 Drawing: Open Subject/Open Medium | Sponsored by Central Tyre Service |
| 3 Pastel: Open Subject/Open Medium | Sponsored by Duncombe Family |
| 4 Mixed Media Art: Open Subject | Sponsored by Shane Knuth |
| 5 Three Dimensional: Open Subject/Open Medium
e.g.Sculpture/Carving/Pottery/Ceramic/Assemblage/Installation Etc | Sponsored by Elders Real Estate & Insurance |

All Rules & Conditions as in 'Section 12 ... Open Art'

APPLY also to Section 14

**PLEASE CHECK THE SCHEDULE for All
Information !!!**

&/or Check with the Entry Stewards



CHECK OUT the NEW "CHALLENGE"

LISTED in the end of Section 12 Open Art

Good Luck to ALL !!!!

"HAVE A GO !!!

"GOOD LUCK TO ALL"

